



Shower - Symetrics
Volume Control - polished chrome
Article number: 36 315 985-00

- Flange 2-3/8" x 2-3/8"
- Fittings group in compliance with DIN 4109: 2
- (ADA)
- NOTE: Important! Due to minimum rough-in requirements, a framing of 2 x 6 studs may be needed.

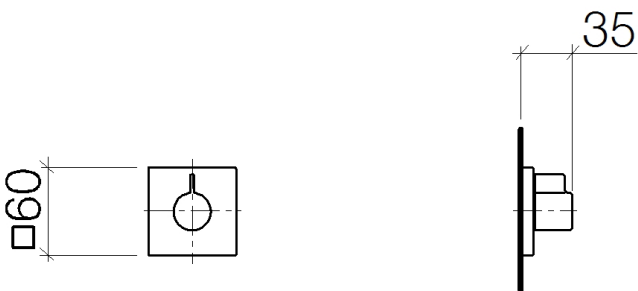


polished chrome

Accessory is required for this item.

Discontinued items available to order until 30.06.2020

Dimensional drawing



All dimensions in mm / inch = mm x 0,0394



Shower - Symetrics
Volume Control - polished chrome
Article number: 36 315 985-00



Shower - Symetrics
Volume Control - polished chrome
Article number: 36 315 985-00

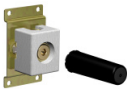
Other surface finishes



platinum matte
36 315 985-06

More custom finish options are available via special production (xTra Service). Please see our finish matrix for availability and pricing or contact a Dornbracht representative.

Required article



35 677 970-90 0010
Rough for volume control
counter-clockwise closing
1/2\"/>

Spare parts list

Number	Item Number	Designation	Number of units
--------	-------------	-------------	-----------------

